

Grapewine



Photo by BENETT HERNANDEZ using
slow photography principles

**READ ABOUT THE SLOWPHOTO
PROGRAM, PAGE 8-9**

**TERM 3
'WHAT'S ON'
PAGE 6-7**

The Grovedale Grapevine is compiled and published quarterly by Grovedale Neighbourhood House.

OFFICE

45 Heyers Rd, Grovedale VIC 3216
Phone: 5241 5717
Monday to Thursday 9am-2pm
Fridays CLOSED
www.grovedalenh.org.au

ADVERTISING & EDITORIAL

DISCLAIMER | The inclusion of inserts, editorials or advertising in The Grovedale Grapevine does not necessarily constitute or imply any endorsement or recommendations concerning the products, services, opinions or information found in the contents.

TO ADVERTISE

Phone: 5241 5717
Email: info@grovedalenh.org.au

EDITORIAL POLICY

Contributors should note that the right to modify submitted articles is retained by the Grovedale Grapevine. All contributors are asked to provide their articles electronically on Microsoft Word format and any images as separate high resolution files. New contributions welcome. Please email us.

LAYOUT & DESIGN

Tet Kelly



Grovedale Neighbourhood House acknowledges Wadawurrung Traditional Owners of this land and all Aboriginal and Torres Strait Islander People who are part of the Greater Geelong community today.



COORDINATOR'S CORNER

Welcome to the Winter 2022 edition of the Grapevine!



As another Term comes to an end, it's wonderful to reflect on some of the activities and achievements we have experienced over the Term.

NEIGHBOURHOOD HOUSE WEEK

Neighbourhood House week is an annual event celebrating the role of Neighbourhood Houses across Australia. This year Neighbourhood House week was held from 9 – 15 May with the theme 'Building resilience by bringing people together' highlighting the key role Neighbourhood Houses play in community recovery, particularly after the impacts of the pandemic. We were pleased to share some free activities with our community during Neighbourhood House week including two Staying Active exercise classes, Morning Tea with the Neighbourhood House team and the launch of the Slowphoto program. We also saw an increase in visits to our Book Swap over the course of the week.

SUCCESSFUL GRANTS

This term we were advised that Grovedale Neighbourhood House was successful in receiving two grants from the City of Greater Geelong. The first grant is for the purchase of flip-top tables that will support program delivery at the Hub. We are currently waiting on the manufacture of the tables, with delivery expected within 8 weeks.

The second grant will support the facilitation of a community engagement project that will fund a consultant to work with our community. The 'Shaping your Neighbourhood' project will seek input from the community to determine future programs and priorities of the Grovedale Neighbourhood House.

To ensure that you receive updates about key activities of the project, request to join our mailing list by contacting us at info@grovedalenh.org.au or 5241 5717, or like us on Facebook and be sure to add us as a favourite so you don't miss our posts.

CONTINUE TO PAGE 3

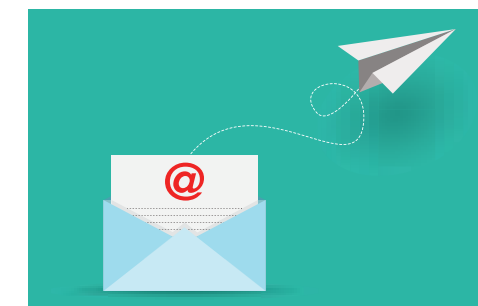
GROVEDALE NEIGHBOURHOOD HOUSE ACKNOWLEDGES THE SUPPORT OF:



FROM..PAGE 2

SCHOOL HOLIDAY OFFICE CLOSURE

With many activities at the Grovedale Hub taking a break over the school holiday period, the Grovedale Neighbourhood House office will close for the first week of the holidays (Monday 27 June through to Friday 1 July). During this time you can contact us on email at info@grovedalenh.org.au



Morning tea with the Grovedale Neighbourhood House Team

OFFICE OPENING HOURS

Over the last 6 months we have continued to experience some challenges managing staff isolation requirements and family care needs that have led to the closure of the office at short notice. To reduce the likelihood of this happening in the future, we have reviewed our office opening hours to ensure our small team can manage unexpected leave and better support our busier days of operation. From Monday 4 July our office hours will be:

Monday to Thursday: 9am-2pm

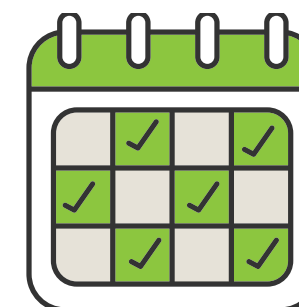
Friday: Closed

We will trial these hours throughout Term 3. If you have any questions or concerns please contact us on 5241 5717 or email info@grovedalenh.org.au

Nateesha

STORIES WELCOME

Does your group or class have important updates for the community next term? If you use the Grovedale Neighbourhood House within the hub and have anything you would like to contribute or share with the Grovedale Hub community for the upcoming issues, please contact info@grovedalenh.org.au.



DEADLINE FOR THE NEXT ISSUE OF THE GRAPEVINE

Copy due: Monday 12th September 2022

Distribution: Monday 29th September 2022

CONTRIBUTORS WANTED:

Sign up at: <https://bit.ly/Grapevinereminder>

Leisurelink reopens after major works

An update from your City of Greater Geelong, Kardinia Ward councillors Ron Nelson, Belinda Moloney and Bruce Harwood

Despite the downright chilly weather these days, there are still plenty of reasons to pull out the togs this winter.

Leisurelink in Waurin Ponds fully reopened this month, after a slew of major works to the aquatic facility.

We now have a new concrete pool to replace the tired one that was reaching the end of its life.

The new 50-metre tiled pool will serve community members of all ages for years to come as they exercise, learn to swim and stay safe around the water and undertake rehabilitation.

Improvements were also made to the waterslide, splash park, water supply, concourse and storage area.

All activities and classes have returned to Leisurelink, including Webstar's Swim School lessons.

Leisurelink is our busiest aquatic facility and we thank members and aquatic users for being patient while the works were carried out.

The council-funded works, which have been well received by the community, are part of our commitment to progressively upgrade ageing facilities across the region.

This focus aims to ensure all community members have equal access to the facilities, spaces and services that council provides, no matter where they live.

We recognise that there are many health, wellbeing and social benefits from being active in the water, so we're thrilled that Leisurelink is fully back up and running for some exercise and family fun.



Cr Ron Nelson, Lifeguard Emily Farlow and Cr Belinda Moloney in front of the new Leisurelink pool.

Feel free to reach out to us at bmoloney@geelongcity.vic.gov.au, rnelson@geelongcity.vic.gov.au and bharwood@geelongcity.vic.gov.au

MEET OUR STEERING GROUP:

Lilian Chee

Lilian moved to Grovedale in April 2021 with her husband Max and now considers Grovedale their home community. She is originally from Malaysia, and Max is from Argentina. They both enjoy the outdoor activities, food and culture that Australia offers, seeing it as a melting pot of all the things they love.

Lilian moved to Australia in 2000 for study and has stayed ever since. She has worked in large financial companies, mining industries and non-government organisations. Most recently she joined a consultancy firm in the hope of expanding her experience further into other sectors, especially in the area of social and community development.

Lilian joined the Grovedale Neighbourhood House Steering Group as she saw the benefits of Neighbourhood Houses when she was living in Kensington, Melbourne. Lilian says, "I hope

to contribute and serve this neighbourhood that we live in and see it grow vibrantly with a strong inclusive and diverse community presence where residents feel welcome, belong and contribute together for the greater good."

We welcome Lilian to the Steering Group and are grateful to have her on board. If you would like to know more about the Steering Group, please contact the Grovedale Neighbourhood House on 5241 5717 or email info@grovedalenh.org.au.



Lilian with her husband, Max

COMMUNITY

Memorial Service to honour the fallen

The Waurin Ponds Memorial Reserve Committee will be having a memorial service on Sunday 3rd July 2022 to mark the 103rd anniversary of the Waurin Ponds Memorial Avenue of Honour and unveiling of refurbished memorial plaques in memory of the local servicemen and servicewomen. The service will commence at 10:30am at the Memorial Reserve Corner of Cochrane Road and Waurin Ponds Drive, followed by Light Refreshments and Reunion. A plate to share would be welcomed. Anyone that attended the Waurin Ponds State School or lived in the district are invited to attend. The memorial was first planted in July 1919 as a tribute to the local servicemen who had served in World War One.





WHAT'S ON at the hub TERM 3 2022



GET ACTIVE

STAYING ACTIVE

Low impact exercise
Mondays 9.15am
Wednesdays 9.15am
\$8 per session
Registration Essential
Contact GNH: 5241 5717

THE JUNGLE BODY WITH KAT B

Thursdays 6pm
Contact Katrina
0433 663 996

TECHNOLOGY

JEZA'S COMPUTER TECH HELP

Providing support with phone,
tablet and laptop issues
Contact: 5241 5717
Available Tuesday mornings
by appointment

DANCE

WINGROVE CALISTHENICS

Mondays 5pm - Juniors
Mondays 7pm - Seniors
Tuesdays 4.30pm - Sub Juniors
Tuesdays 6.30pm - Inters
Thursdays 7.30pm - Masters
Saturdays 9.30am - Tinies
Contact: Cathy 0416 255 684

FOLKWAVE PUNJABI DANCE

Tuesdays 6pm-8pm
Contact: Avtar
0423 193 998

LINE DANCING

Classes Fridays from 9am
Events 4th Saturday of the month
12noon-5pm
Contact: Pauline
0409 164 701

BALLROOM DANCING

Suitable for beginners
Fridays 6.30pm-9pm
Contact: Jose 0401 673 221

MUSIC & SONG

UKES 'N' MORE

Community Ukulele Group
Wednesdays 7.30pm
Contact: Ross 0430 871 045

GET CREATIVE

ACRYLIC & PASTEL ART CLASSES

Mondays 1.30pm-4pm
Saturdays 10.30am-1pm
Contact: Jen Jones
0408 461 559

SOGETSU IKEBANA

Thursdays 6pm-8pm
(Commencing 28 July)
Contact: Christopher
5261 3983

CRAFT CREATORS SOCIAL GROUP

Fridays 9.30am-12noon
\$4 per week
Contact GNH: 5241 5717



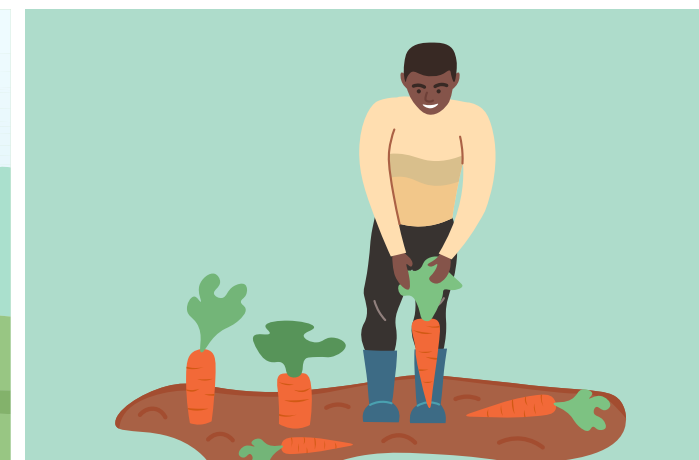
WELLBEING

TOWN (TAKE OFF WEIGHT NATURALLY) WEIGHT LOSS SUPPORT GROUP

Wednesdays 6pm
Contact:
Heather 0417 516 020

BUDDHIST MEDITATION

Sunday fortnightly
from 10am-11.15am
Contact: Alex 0407 018 498



LANGUAGE & PHILOSOPHY

KYBALION DISCUSSION GROUP

Wednesdays 9.30am - 12noon
\$2.50 per week
Contact: Michael
5264 7484

GITA DISCUSSION GROUP

Wednesdays 12noon-3pm
\$2.50 per week
Contact: Michael
5264 7484

ZIMBABWEAN LANGUAGE CLASS

Sundays 2pm-4.30pm
Contact: Athanas
0424 326 267



**DO YOU HAVE AN IDEA FOR A
CLASS, ACTIVITY OR GROUP?**
Grovedale Neighbourhood House would love to
hear from you! Email info@grovedalenh.org.au.
Call 03 5241 5717

U3A

For all bookings contact U3A
5244 5114

DISCUSSION GROUP:

'Let's talk about that'
Tuesdays 12 noon - 2pm

OUR SOLAR SYSTEM

Tuesdays Fortnightly
1.30pm-3.30pm

HUMAN EVOLUTION

Wednesdays 9am-11.30am

HOW EARTH SCIENCE SHAPED AUSTRALIA AND ITS PEOPLE

Wednesdays 1.30-4pm

SPANISH INTERMEDIATE / ADVANCED

Wednesdays 2pm-4.15pm

TRAGEDY AND COMEDY IN LITERATURE

Thursdays 9.30am-11am

YOGA

Fridays 7.45am-9am

COMMUNITY GARDEN

FOOD SWAP

Bring your excess produce
to swap at the Grovedale
Community Garden
Third Saturday of the month
9.30am-10.30am
Contact: Vic 0407 231 350

TOY LIBRARY



GROVEDALE TOY LIBRARY

Saturdays 9.30-11.30
For more info go to:
grovedaletoylibrary.org.au

SENIOR CITIZENS

GROVEDALE SENIOR CITIZENS

Offering regular activities at the
Grovedale Hub
Contact: Julie 0419 549 521

Carpet Bowls

Mondays 1pm-3pm

Gentle Exercise

Tuesdays 9am-10am

Cards 'Euchre'

Tuesdays 1pm-3pm

Bingo

Thursdays 1pm-3pm



SlowPhoto Immerses Students in the Art of *Mindful* Photography



SlowPhoto was a 6-week workshop program held at the Grovedale Neighbourhood House during Term 2.

The program was designed and run by local photographer Nicole Marie. This workshop series is centred around developing mindful observation, through the practice of *slow* photography.

How we photograph can be as important as *what* we choose to photograph. Being mindful in our approach transforms the images we produce. It also impacts how we feel about those images and the experience itself.

Slow photography is a mindset; focussing on the experience of making images and expressing ourselves through photography; it also has a flow-on effect on the way we see and interact with the world.

To deepen this interaction, students have learnt tools of composition and capture, enabling them

to connect with, interpret and capture their own environment and experiences.

Benett Hernandez, a participant in the Slow Photo program, believes the workshops have changed her approach to photography by learning that “It is not about taking thousands of photos, it is about the meaning and appreciating the visual world and be inspired in capturing the magical moments.” Benett also says “The sharing of photos every week gave us opportunity to learn more and appreciate each other’s accomplishments.”

An exhibition of student photos taken during this program will be displayed in the foyer at the Grovedale Community Hub in Term 3.

This project was supported by the City of Greater Geelong through its Community Investment and Support Fund.

PHOTOS BY NICOLE MARIE

How WE PHOTOGRAPH
CAN BE AS IMPORTANT AS
What WE CHOOSE TO PHOTOGRAPH.

Grovedale Toy Library celebrates World Play Day

Grovedale Toy Library celebrated World Play Day on Saturday 28th May with a special members event. Each year, World Play Day recognises children's right to play. This year's theme, *Rediscover Play; helping families save money and reduce waste*, encompassed the core values driving Grovedale Toy Library, and we were thrilled to be able to host time for families to spend playing together as a community.

Our little members were treated to story time with Jean from Geelong Regional Libraries, and a special reading of *Edward the Emu AND Edwina the Emu* by author, Sheena Knowles. We were delighted to launch our newest collection of toys, Story Sacks, which pair well known Australian books (and some international) with puppets and toys that help children to engage in different ways with the story. These Story Sacks were funded via a generous grant from the Geelong Community Foundation, and we can't wait to see our members loving story time at home!

Bookish Play helps children to develop a deeper understanding of the story, can assist in expanding vocabulary and provides opportunities to practice sequencing and retelling. It's fabulous for reluctant readers, can enhance comprehension and is, importantly, lots of fun.

As Grovedale Toy Library continues to welcome new members, we look forward to hosting more themed Stay & Play sessions throughout the remainder of the year – our next member event is June 25th, Let's Explore the World! Kinder and early primary kids will love getting cosy at our school holiday Fun & Games morning. Term 3 sees plans for a Musical Morning and more. Stay up to date with what is happening at Grovedale Toy Library on social media, on our website, or pop in for a chat!

WEBSITE: grovedaletoylibrary.org.au



Learning about different cultures

The children at Grovedale Child and Family Centre have been learning about and celebrating different cultures. So far this year, we have learnt about Chinese New Year, St Patrick's Day and Holi as well as celebrating Harmony Week. For Holi, also known as the festival of colours, the children participated in a colour run.

Our kinder loves to celebrate the unique identities of all of our families and community members. Developing an understanding of other cultures, or 'cultural awareness', lets you have more meaningful interactions with those around you. You're building your respect and empathy for other people, and celebrating your differences as well as your similarities.



The Grovedale Marshall Probus Club is a combined club for men & women retirees

We are a mixed club of retired and semi-retired men and women with about 60 members and this year the club has been in existence for more than 7 years. We welcome enquiries from those interested in joining us. Membership is open to any member of the community who is retired or semi-retired and is looking for friendship and fun. Our monthly meetings are held on the second Thursday of each month at 10am in the Grovedale Community Hub, 45 Heyers Road, Grovedale. Why not plan to come along!

What is Probus? Probus provides you with the opportunity to meet with fellow retirees on a regular basis and join in activities in the company of new friends. Unlike Rotary, Lions and Apex Clubs, Probus Clubs are not involved in fund raising or service to the community. They have no religious or political connections. Enjoy your retirement – Come and be a guest at one of our meetings or join us at an event to see how much fun we have. Three visits can be made before you need to decide whether to join or not.

Some reasons to join!

- Listen to interesting guest speakers
- Make some great friends
- Regular Outings and activities
- Lunches and coffee mornings throughout each month.

Probus Membership Benefits

- Access the Probus Members Benefit Scheme that offers exclusive discounts from a range of partners on travel, accommodation, finance and lifestyle.



- Access to three exclusive Probus Travel Insurance plans.
- Stay in the loop with Active Retirees Magazine & Active Retirees E-newsletter.
- Participate in competitions available only to Probus Club members.
- Become part of the International Probus community.

General Enquiries

Anne Lane (Secretary), 48lane44@gmail.com

Membership Enquiries

Pam Simpson: 0447 088 238 or email pjsimpson49@hotmail.com'

Mailing Address

Grovedale Marshall Probus Club.
PO Box 2140
Grovedale East
VIC 3216

Website:

www.probusouthpacific.org/Grovedalemarshall



Connect with GNH

We're on facebook and Instagram. Like/Follow us to get the latest updates as we share real time information from the community.



/GrovedaleNeighbourhoodHouse



/grovedaleneighbourhoodhouse

Grovedale Waurnd Ponds Rotary Club raises funds for two disasters

BY GARY CLARK

Our club has been busy raising funds for two disasters: flood relief for the Queensland and NSW flood victims (we organized and paid for two full truckloads of garden and construction tools), and the Ukraine Relief Aid (we raised \$2000 to go to this fund).

We raised these funds from our Bunnings BBQ's where 20 of our members worked diligently with the very generous support of Bunnings who provide the tent, BBQ and Gas. It is so much fun working at our BBQ's.

Our current project is installing garden beds at Encompass at The Paddock.

The Paddock is Encompass Community Services' 7-acre farm in Leopold that provides a unique setting and offers a fantastic opportunity for people of all abilities and backgrounds to explore new experiences and learn new skills.

At present, The Paddock grows and supplies seedlings to local farmers; as well as supply seasonal produce to local cafes/restaurants. It also

has a nursery that provides commercial propagation to several farms in the region. The Paddock is an accessible and inclusive space for skills development and community skill-sharing.

We are also helping with mock interviews for Year 9 Students at Belmont Secondary College. We conduct the interviews for employment part time and fulltime. We do this to help students understand what is expected of them when they apply and are interviewed for jobs. We also perform mock interviews at Grovedale Secondary College and Geelong Lutheran College.

We always have a project under way and this is a way of giving back to the Community which is one of the aims of Rotary. We have a lot of fun and fellowship while carrying out these tasks.

Our club needs new members.

If you would like to join us as a member or just as a helper (Friend of Rotary) call Gary Clark 0418593767.



Exciting News from the Lions Club of Grovedale/Waurnd Ponds

BY DAVID RIDLEY

We are happy to announce our Community Raffle for 2022. What a great range of prizes on offer; and you can be in the running for a meagre investment of \$2.

But! The best part is that every \$2 in ticket sales goes straight back to the participating organisations which have great programs and projects they are pursuing.

You can help them achieve their goals!

The Lions Club of Grovedale/Waurnd Ponds is very pleased to again be organising this opportunity for local schools, kindergartens, and other community interest groups to raise much needed funds.

Tickets will be on sale through July and August.

Organisations will be reaching out to their members, friends, and the wider local community for their support of just \$2 each ticket.

If you can't find tickets give us a call:

David Ridley - mobile 0459 574 347

Mark Grey - mobile 0428 557 564

Also, if you'd like to find out more about Lions, the biggest service organisation in the world, give us a call.



Profiling a local Geelong volunteer for EdConnect Australia

Deb Trotman (65), a local Geelong EdConnect Australia volunteer has been supporting students in schools for over a year.

Deb volunteers in two local schools, in the Geelong region, one a primary school and the other, a high school, in a variety of roles. She is just one of over 1,500 skilled volunteers who gave up 2,506 hours to support an amazing 17,800+ students through EdConnect Australia in the last year alone.

EdConnect Australia Geelong and Surf Coast Liaison Officer Sally Edgerton explains what makes Deb such a great volunteer.

"Moving to the Bellarine Peninsula 12 years ago, Deb was previously a coordinator of a call centre in Melbourne and is trained as an ICU Technician, having worked in children's and oncology hospital wards. She is very talented musically and her volunteering role with EdConnect Australia helps foster her passion of supporting young people to have a positive outlook," she said.

"Last year Deb started mentoring a Year 6 student, supporting him as he prepared to transition to secondary school. Deb assists in both a one-on-one capacity and classroom learning support. She even supports the senior performing arts classes around their musical production which she is most excited about," said Sally.



"Volunteering in schools is part of my life long interest in helping young people aspire to achieve their dreams and goals, help them with direction in this crucial time of their development."

Deb Trotman, a Geelong based EdConnect Australia Volunteer

Deb talks about what connects her with the students.

"I mentored a young student as they prepared to transition to a secondary school environment – it doesn't feel that long ago that I did that. I could relate to many of his worries and concerns," she explains.

EdConnect volunteers offer one-on-one mentoring to students in need or assistance in the classroom with subjects such as numeracy, reading, science or help around the school in kitchen garden projects, garden maintenance, library and much more.

"It's nice to be part of the young people's learning journey and it's not always classroom learning, you can help in a garden, cooking, specialist classes or even help out around the school with maintenance or library work" says Deb.

Become an EdConnect volunteer and help make

a difference in a young person's life. Visit www.edconnect.org.au or contact edconnect@edconnect.org.au 1800 668 550.

For more information:

Sally Edgerton, EdConnect Australia Geelong/Surf Coast Region Liaison Officer

sally.edgerton@edconnect.org.au

0498 015 323



BOOK YOUR EVENT

Grovedale Neighbourhood House has a range of rooms, and a beautiful hall with a commercial kitchen that you can rent for workshops, meetings, events and activities. Give us a call now to discuss your needs and we will let you know availability and the range of reasonable rental costs. Email info@grovedalenh.org.au. Call 03 5241 5717

Uniting Barwon's Op Shops generate urgently needed funds for our Emergency Relief budget



unitingvictas.org.au

BY ELIZABETH HOPKIN

Our Geelong West, Highton and Point Lonsdale stores urgently need volunteers for Saturday shifts.

If you are an Op Shop fan, love customer service, ready to help your local community and make new friends, Uniting Barwon needs you.

You are also be available for 3 or more hours a week (or fortnightly or monthly.) This is best for those who need 15 hours per week volunteering for your Centrelink mutual obligation.

Uniting Barwon needs you!

Please contact Elizabeth Hopkin on 4210 1113 or email elizabeth.hopkin@vt.uniting.org

Other urgent volunteer vacancies with Uniting Barwon include:

Emergency Relief: Receptionists, Interviewers, Van Crew, Maintenance and Food Distribution Team Members at Norlane and Grovedale. Social media guru to help with ER marketing and awareness on Facebook.

Retail: Team Members and Team Leaders at Highton, Norlane, Geelong West and Point Lonsdale. Sorting donations at Grovedale.

Garden maintenance and Cleaners for the Norlane and Grovedale sites.

Here's why we do what we do:

Emergency Relief addresses the gap in resources including food, clothing and material aid. Our volunteer teams provide services to individuals and families who are struggling to make ends meet.

WE OFFER SUPPORT SUCH AS:

- Food and food vouchers
- Clothing – Adult & Children
- Nursery Items
- NILS (No Interest Loan Scheme)
- Homelessness and Housing
- Education Assistance Program
- Advocacy and links to other services

SPREAD THE WARMTH

Uniting Barwon will be included in the "Spread the Warmth" Winter Local Appeal Program. Uniting asks the community for donations of food, blankets, coats, tents, winter woollies and flasks etc., for us to distribute to our ER clients in need. There are various drop off points including the Op shops (Geelong West, Highton, Norlane and Pt Lonsdale) and Emergency Relief centres at 272 Torquay Road Grovedale & 10 Wendover Avenue Norlane.

GROVEDALE - 4210 1100 | NORLANE - 5278 8492

ADVERTISE WITH US

Advertising is welcome for the online version of the Grapevine.

Please contact info@grovedalenh.org.au or phone us at (03) 5241 5717.

ENJOY THE MANY WAYS TO READ THE GRAPEVINE:

EMAIL: Subscribe to our email list please enter your details at <https://mailchi.mp/23f04d167998/grapevine>

WEBSITE: Visit our website at www.grovedalenh.org.au/grapevine

PRINT: Pick up a copy from the Grovedale Neighbourhood House reception desk at 45 Heyers Road.





Spread the warmth this winter.

With the colder months upon us, we need your help to bring some comfort to those who suffer most in the cold weather.

Your generosity will directly impact people in your local community seeking shelter and warmth.

Donate online: unitingvictas.org.au/local-winter



Scan me to
donate online.

**Support our
Winter Local
Appeal.**

Donate winter items: Food, blankets, coats, tents, winter woollies and flasks

Drop off location: 272 Torquay Road Grovedale. 10 Wendover Avenue Norlane

Op Shops: Highton(8 Porter Ave), Geelong West (23 Pakington St) Pt Lonsdale (93 Pt Lonsdale Rd)



Uniting is the community services organisation
of the Uniting Church in Victoria and Tasmania.



Uniting