



GROVEDALE grapevine

The Grovedale Grapevine is compiled and published quarterly by Grovedale Neighbourhood House.

OFFICE

45 Heyers Rd, Grovedale VIC 3216
Phone: 5241 5717
Monday to Thursday 9am-2pm
Fridays CLOSED
www.grovedalenh.org.au

ADVERTISING & EDITORIAL

DISCLAIMER | The inclusion of inserts, editorials or advertising in the Grovedale Grapevine does not necessarily constitute or imply any endorsement or recommendations concerning the products, services, opinions or information found in the contents.

TO ADVERTISE

Phone: 5241 5717
Email: info@grovedalenh.org.au

EDITORIAL POLICY

Contributors should note that the right to modify submitted articles is retained by the Grovedale Grapevine. All contributors are asked to provide their articles electronically on Microsoft Word format and any images as separate high resolution files. New contributions welcome. Please email us.

LAYOUT & DESIGN

Tet Kelly / Kubo Kreative



Grovedale Neighbourhood House acknowledges Wadawurrung Traditional Owners of this land and all Aboriginal and Torres Strait Islander People who are part of the Greater Geelong community today.



Welcome to Autumn

TERM 2 2024



GROVEDALE
NEIGHBOURHOOD HOUSE

2024 Term Dates

Term 1 - Monday 29 January to Thursday 28 March

Term 2 - Monday 15 April to Friday 28 June

Term 3 - Monday 15 July to Friday 20 September

Term 4 - Monday 7 October to Friday 20 December

Office Closures

Please be advised of our office closures for Term 2

Monday 1 April - Easter Monday Public Holiday

Tuesday 2 April - 1st Week School Holidays

Wednesday 3 April - 1st Week School Holidays

Thursday 4 April - 1st Week School Holidays

Thursday 25 April - ANZAC Day Public Holiday

Monday 10 June - King's Birthday Public Holiday

Stories are welcome



Does your group or class have important updates for the community next term? If you use the Grovedale Neighbourhood House within the hub and have anything you would like to contribute or share with the Grovedale Hub community for the upcoming issues, please contact info@grovedalenh.org.au.

On the cover: Tactile Mandala created by the GNH Community, see story on page 4. Photo by Nateesha Thomassen

KARDINIA WARD UPDATE:

CITY OF GREATER GEELONG

Grovedale's roads get major safety boost

By Kardinia Ward Councillors- Bruce Harwood, Belinda Moloney, Ron Nelson

The start of the year has seen plenty of activity in Greater Geelong, with summer again drawing large numbers of visitors to the region.

With this increase in visitation, combined with the growing population across the municipality, it is imperative that our road network is safe.

Ensuring the safety of the community is perhaps the most important function of Council.

We invest heavily in transport and road safety, with various programs in place, and we work closely with federal and state governments to achieve positive outcomes for the community.

Recently, the Marshalltown Rd/Bailey St intersection (roundabout) project was completed.

The major improvements undertaken formed part of the 2023/24 BlackSpot Safety program, which is an initiative aimed at reducing the number and severity of crashes on Australian roads.

Grovedale residents would appreciate that this roundabout was in need of safety improvements, and the BlackSpot Safety program was the ideal mechanism to see this happen.

The program focuses on improving road safety through the identification and rectification of high-risk crash locations.

The Marshalltown Rd/Bailey St project was aimed at enhancing road safety and increasing pedestrian security, and had a clear focus on reducing approach speeds of drivers while also providing improved accessibility for all.

It has seen the installation of wombat crossings, roundabout upgrades, awareness initiatives and street light upgrades.

New footpaths have also been installed, along with kerb and channel enhancements, and significant drainage works undertaken.

As Councillors and representatives of the Kardinia Ward we aim to ensure the ongoing safety of the Grovedale community is our priority.

We are confident this project will greatly increase road safety and accessibility in Grovedale, and we acknowledge the local community for its patience while these works were completed.



Connect with GNH

We're on Facebook. Like/Follow us to get the latest updates as we share real time information from the community.



/GrovedaleNeighbourhoodHouse





Reflections: A Journey of Creativity and Community

By Nateesha Thomassen, GNH Coordinator

What an incredible start to the year we've had! We welcomed back our regular activities and shared some wonderful new opportunities with our community through our popular Taster Series workshops. These workshops are offered at a heavily discounted rate thanks to grant funding received from the City of Greater Geelong.

Creative Wellness with Benett Hernandez from Creative Wellness Haven

Anyone that has experienced one of Benett's gorgeous workshops would agree that Benett is truly an inspiration and her positive energy and kindness create an experience like no other.

Benett's Art Journaling participants were treated to gorgeous art materials, meditation and guidance on

how to create a personal art journal on canvas or in a more traditional book form. The group finished the session inspired to continue to record their journey through art.

The Mandala Power Workshop group ventured out of their homes on one of our hottest days this year to learn the secrets of creating beautiful Mandalas.



Benett Hernandez at the Rooted in Wellness Terrarium-making Workshop

[continued page 5 >](#)

< from page 4

Along with creating their own Mandala on canvas, the group worked together to make a tactile Mandala as gratitude for the Grovedale Neighbourhood House bringing them together.

Benett transformed our Moonah Room into a gorgeous natural 'Boutique' for the Rooted in Wellness Terrarium-making Workshop. Participants were offered an extensive array of pebbles, plants and critters to build their own terrarium using mindful thought practice.

Benett is currently developing her website, we will share the details once that is available.

Creative Workshops with Samantha Thompson

We were so excited to offer the skills and experience of professional artist Samantha Thompson to our community. Samantha is an artist based in Lethbridge with a highly successful career spanning over 20 years.

Samantha shared her printmaking knowledge with an eager group, guiding them through the steps to creating a linocut print. Everyone had a wonderful time and the prints created were awesome. The standard achieved by first timers was incredible.

Samantha also facilitated a mixed media workshop, providing our budding artist with the guidance, freedom and artist quality materials to create unique final pieces. The group were also treated to a linocut lesson, and the prints created were incorporated into the artworks.

To find out more about Samantha's art practice go to www.samanthathompson.com.au

Macrame Knots with Anita Shaw from Knots by Anita

Anita shared her love of macrame knot tying with two groups, each creating a stunning wall hanging to take home. Everyone had a lovely time, meeting new people and sharing their other creative loves. It was great to see so many using their learned skills to add their own personal twist to their creations.

Anita can also be found selling her wonderful creations at local markets for more information can be found on her website knotsbyanita.com



Samantha Thompson (fourth from left) and Linocut first-timers show off their prints



Anita Shaw (left) teaching a new Macrame class.



Benett Hernandez with the Art Journaling participants

More Taster Series

We are excited to announce that Anita and Benett will be returning in Term 2 with more wonderful Taster Series workshop opportunities. For more information go to pages 9 and 15.



Introduction to Feldenkrais Awareness Through Movement® classes

Come and discover the benefits of these gentle movement classes which can improve your ease of movement, posture, balance, flexibility, comfort or pain. Become more aware of how your body moves and learn new movement patterns to give you greater ease and freedom of movement in your everyday activities.

These gentle movement classes foster self-discovery and learning as you work at a pace comfortable for you and your body. Suitable for all fitness levels and abilities but will include getting down onto the floor. Watch your own transformation over the whole 6-week program or drop in to give it a try one week.

Starting Monday 22nd April 10.30am Grovedale Neighbourhood House. \$90 for the 6 weeks or \$18 per drop-in class. For more information and booking visit www.neurofocus.com.au or phone Kim 0408 344 752 or email neurofocus@gmail.com



DO YOU HAVE AN IDEA FOR A CLASS, ACTIVITY OR GROUP?

Grovedale Neighbourhood House would love to hear from you!

Email info@grovedalenh.org.au

Call 03 5241 5717



Deadline for the next issue of the Grapevine

CALL FOR CONTENT: MONDAY, 3 JUNE 2024

COPY DUE: MONDAY, 10 JUNE 2024

PUBLICATION: MONDAY, 24 JUNE 2024

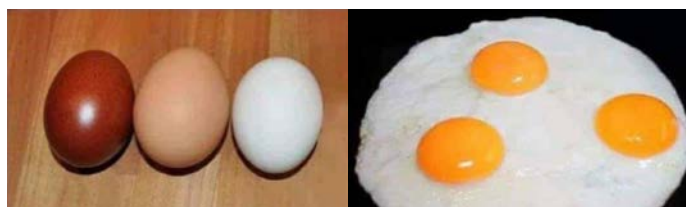
Want to receive a reminder to submit your article?

SIGN UP AT: <https://bit.ly/Grapevinereminder> or call us on 5241 5717

Celebrating Diversity

By Merrin Wood, Kindergarten Teacher

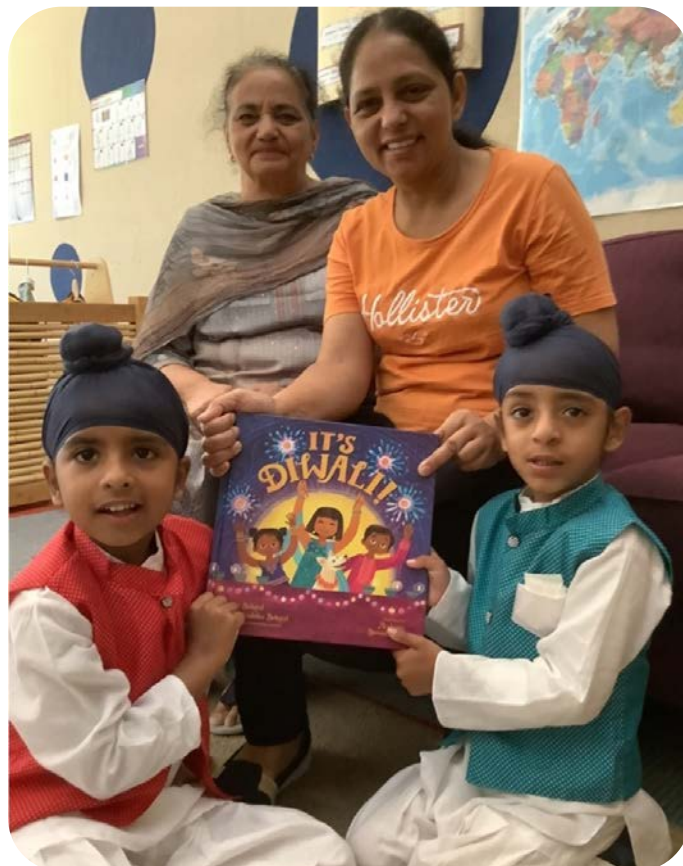
Harmony Week, March 18 to March 24, celebrates all the cultures and backgrounds of our community living together as one. We shared the message of inclusiveness, respect and why everyone, from the traditional custodians of the land to those from around the world who now call Australia home should feel that they belong. As a team at Grovedale Child and Family Services Centre, we believe that celebrating our difference, as well as our common interests, helps unite and educate us.



At the Grovedale Child and Family Services Centre, we invited our families to contribute a photo for a display in our foyer, to show that we all belong. Children tend to be very accepting and interested in differences between them and their peers. We discuss these topics by highlighting that in some ways we are all different but inside we are all the same. We all have different families and friends but we all just want to feel safe and loved.

One family shared some fairy tales in German, one their Nepalese traditional dress and another family showed us how to cook traditional potato Parantha from their Punjabi Indian culture. We also participated in Holi, which is a festival of colour and were shown how to do origami by a Japanese educator at our service.

We shared a lovely book called "Room on our rock". This clever picture book has one story that can be read two different ways. When read from front to back, the seals believe there is definitely no room on their rock for others. But when the book is read from back to front, the seals welcome others to shelter on their rock. It is a heartwarming story about sharing, compassion and living in harmony. At our centre we have 68 % CALD families (Culturally and Linguistically Diverse) and we are all respected and valued. We share a wonderful sense of community and WE ALL BELONG.



"We all have different families and friends but we all just want to feel safe and loved."

GNH TASTER SERIES

Rooted in Wellness

Therapeutic Terrarium-Making for Wellbeing

with BENETT HERNANDEZ

Special
Discounted
Rate of

\$5



A unique and transformative workshop that combines the principles of mindfulness and holistic wellness with the art of terrarium-making. This workshop is designed to help cultivate a deeper sense of inner peace and wellbeing, while also creating a beautiful and personalised terrarium to take home.

Numbers are limited and bookings are essential

DATE & TIME

Tuesday 21 May
9.30am-12noon

LOCATION

Grovedale Neighbourhood House
45 Heyers Road
Grovedale

MATERIALS

All materials will be supplied.

BOOKINGS

Contact Grovedale Neighbourhood House to book your spot today on 5241 5717

GNH TASTER SERIES

This activity is part of the Grovedale Neighbourhood House Taster Series made possible by grant funding received from the City of Greater Geelong through its Community Investment and Support Fund.



Greetings from the Lions Club of Grovedale/Waurn Ponds



We are happy to report to the Grovedale and Waurn Ponds community that our annual Lions Christmas Cakes and Puddings sales were a great success thanks to the support of our community.

The main locations for the sale of our Lions Christmas Cakes and Puddings over December were Waurn Ponds Shopping Centre and Bunnings Waurn Ponds. A big thanks goes to those organisations for their support in providing us with times and space for our 'pop up' sales outlets.

Sales at Waurn Ponds, outside Coles \$1495, and outside Woolworths \$1766, totalled \$3261. Bunnings sales totalled \$1195. The balance came from sales at various organisations in the Grovedale/Waurn Ponds area and through Club members individual sales.

So, thanks to you the community for your support, we made a total profit of \$7,169.

These funds will be disbursed to a range of causes in the local, state, and national efforts where Lions Clubs operate.

We are always wishing to meet and link with willing volunteers in our community.

What about You?

If you would like to have a chat with us about what we do and think you can help, either as a helper or as a member please email our club or contact the following people.

Grovedale/Waurn Ponds Lions – Contact email and Phone numbers:

Grovedalewaurnponds.vic@lions.org.au

Allan Reeve (Membership Chairman 2023-2024) – 0418 527559

David Ridley (Club Secretary 2023-2024) – 0459 574 347



BOOK YOUR NEXT ACTIVITY AT GNH

Located in Heyers Rd, Grovedale, the vibrant Grovedale Neighbourhood House offers a diverse selection of rooms and a stunning hall complete with a well-equipped commercial kitchen, available for hire to cater to your specific requirements. Whether you're planning workshops, meetings, programs or community events, our flexible spaces are designed to accommodate your needs. Reach out to us today and our friendly team will be delighted to assist you in discussing availability and providing you with details regarding the range of affordable hire costs we offer.

Email info@grovedalenh.org.au. Call 03 5241 5717.

More information is on <https://www.grovedalenh.org.au/venue-hire/>

COMMUNITY FILM NIGHT

Saturday 15th June at 6.30pm, Grovedale Neighbourhood House

FASHION REIMAGINED

Information and
bookings

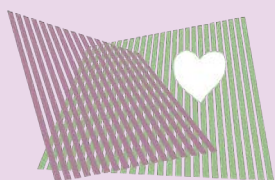
Presented by



With the support and partnership of



Come join our great film and networking night.
Participate in the discussion of sustainable fashion and
how to reimagine our relationship with clothing.
This is a free event, however, bookings are essential.



GROVEDALE
NEIGHBOURHOOD HOUSE

What's On

Term 2 2024

GET ACTIVE

TAI CHI

Tuesdays 10.30am-11.30am

\$8 per session

Contact: GNH 5241 5717

STAYING ACTIVE

Low impact exercise

Mondays 9.15am

Wednesdays 9.15am

\$8 per session

Registration Essential

Contact: GNH 5241 5717

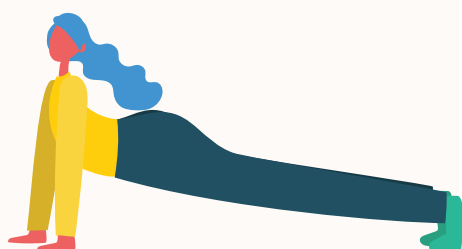
NEW!

FELDENKRAIS AWARENESS THROUGH MOVEMENT®

Starts Monday 22 April

10.30am

Contact Kim 0408 344 752



DANCE

WINGROVE CALISTHENICS

Mondays 5pm - Juniors

Mondays 7pm - Seniors

Tuesdays 4.30pm - Sub Juniors

Tuesdays 6.30pm - Inters

Thursdays 7.30pm - Masters

Saturdays 9.30am - Tinies

Contact: Cathy 0416 255 684

FOLKWAVE PUNJABI DANCE

Tuesdays 6pm-8pm

Contact: Avtar 0423 193 998

LINE DANCING

Classes Fridays from 9am

Events 4th Saturday of the month

12noon-5pm

Contact: Pauline 0409 164 701

BALLROOM DANCING

Suitable for beginners

Fridays 6.30pm-9pm

Contact: Jose 0401 673 221

TASTER SERIES

All materials supplied

Bookings Essential

Contact: GNH 5241 5717

TERRARIUM-MAKING

Tuesday 21 May

9.30-12noon

\$5

KOKEDAMA

Friday 14 June 6pm-9pm

\$15

NEW!

MACRAME POT HANGER

Thursday 13 June

10am-1pm

\$10

SPECIAL EVENT

Community Film Night

"Fashion Reimagined"

Saturday 15 June

6.30-9pm

Free event. Bookings essential.

For more info Scan QR code

SPECIAL



MUSIC

UKES 'N' MORE

Community Ukulele Group
Wednesdays 7.30pm
\$3.00 per session
Contact: Ross
0430 871 045

GET CREATIVE

KIDS ART CLASSES

Mondays, Tuesdays and
Wednesdays
5.30pm-6.30pm
Contact: Jessica 0490 028 113

ACRYLIC & PASTEL ART CLASSES

Mondays 1.30pm-4pm
Contact: Jen Jones
0408 461 559

SOGETSU IKEBANA

Thursdays 6pm-8pm
Contact: Christopher 5261 3983

CRAFT CREATORS SOCIAL GROUP

Fridays 9.30am-12noon
\$4 per week
Contact: GNH 5241 5717

LANGUAGE & PHILOSOPHY

SECOND COMING OF CHRIST DISCUSSION GROUP

East meets West: A Philosophical
study of the great work of
Paramahansa Yogananda
Wednesdays 9.30am-12noon
\$3 per session
Contact: GNH 5241 5717

ZIMBABWEAN LANGUAGE CLASS

Sundays 2pm-4.30pm
Contact: Athanas 0424 326 267

WELLBEING

TOWN (TAKE OFF WEIGHT NATURALLY) WEIGHT LOSS SUPPORT GROUP

Wednesdays 6pm
Contact: Heather 0417 516 020

BUDDHIST MEDITATION

Sunday fortnightly from
10.30am
Contact: Alex 0407 018 498

CONSCIOUS BREATHWORK SESSIONS

1st Saturday of each
month
10am-12.30pm
Contact: Elyse 0402 675 157



U3A

**For all U3A bookings
contact U3A 5244 5114**

OUR SOLAR SYSTEM (AND MORE)

Tuesday Fortnightly
1.30pm-3.30pm

MAH JONG

Fridays
1pm-3pm

ADVANCED PAINTING ACRYLIC

Wednesdays 2pm-4pm

YOGA

Wednesdays & Fridays
8.45-10am

TRAGEDY AND COMEDY IN LITERATURE

Thursdays 9.30am-11am



COMMUNITY GARDEN

FOOD SWAP

Bring your excess produce
to swap at the Grovedale
Community Garden
Third Saturday of the month
9.30am-10.30am
Contact: Vic 0407 231 350

TOY LIBRARY

GROVEDALE TOY LIBRARY

Tuesdays 9am-10.30am
Thursdays 9.30am-11am
Saturdays 9.30am-11.30am
Appointments may be necessary.
For more info go to:
grovedaletoylibrary.org.au

SENIOR CITIZENS

GROVEDALE SENIOR CITIZENS

Offering regular activities at the
Grovedale Hub.

Contact: Julie 0419 549 521

Carpet Bowls

Mondays 1pm-3pm

Gentle Exercise

Tuesdays 9am-10am

Cards 'Euchre'

Tuesdays 1pm-3pm

Bingo

Thursdays 1pm-3pm

Rotary Club of Highton

Fyansford Paper Mill Heritage Tours



Photo by Domenico Mazza

Heritage Victoria and National Trust listed Fyansford Paper Mill is AUSTRALIA'S ONLY intact old Paper Mill with its 915-metre water race. Since the Fyansford Paper Mill ceased manufacturing paper in 1923, there have been some very interesting, amazing and different uses of the Paper Mill buildings.

The Fyansford Paper Mill is now home to over 15 businesses, including a winery and restaurant, café, home-ware shop & café, yoga studio, two art galleries, a ceramic pottery, provincial platter makers, jeweller, plus other small independent artisan businesses with private studios across the site.

The Rotary Club of Highton commenced its first Fyansford Paper Mill Heritage Tour on 6th November 2022, and have since run public tours every Sunday, with a break over Christmas.

Group tours are available and are perfect for community groups, sporting clubs, social clubs, charity organisations, businesses and school groups. Group tours (for 15-50 people) are best booked for a Wednesday, Thursday or Friday when the majority of

businesses in the Fyansford Paper Mill complex are open.

The Rotary Club of Highton, like all Worldwide Rotary Clubs, is a "not for profit" organisation. Fyansford Paper Mill tours have so far hosted more than 2,270 people, raising over \$18,000 for charities and community projects for those in need.

All tours commence at 11.00am and finish around 12.15pm at the Fyansford Paper Mill private museum. Tour cost is \$10 per person with 100% of all funds go to local community projects and charities.

The Fyansford Paper Mill Heritage Tour is an interesting, fascinating and enjoyable outing ideal for social outings, as morning and afternoon tea. Lunch is also available at the Paper Mill complex or at the nearby Fyansford Hotel.

For more information please check out the Fyansford Paper Mill Precincts Guided Tours Facebook site www.facebook.com/FyansfordHeritageTours/

GNH TASTER SERIES

Home Décor Delights

with ANITA SHAW



Colourful Spiral Plant Hanger Workshop

Thursday 13 June | 10am-1pm

Special discounted rate of \$10

Create your very own colourful plant hanger whilst learning how to tie the beautiful spiral macrame knot. Enjoy a fun atmosphere where you will be fully supported to complete a macrame creation that you can display in your home.

Your choice of bright cord and matching pot is included to take home.

Kokedama Workshop

Friday 14 June 6pm-9pm

Special discounted rate of \$15

Join us for some messy fun and be prepared to get your hands dirty in this rewarding experience of creating a ball of plant and string goodness.

Kokedama is the Japanese practice of encasing the root ball of a plant in potting mix and then wrapping it in a layer of sphagnum moss then finishing off by entwining it all with string.

Kokedamas are a beautiful addition to your home decor.

All materials, quality indoor plants and expert tuition included.

Numbers are limited and bookings are essential.



LOCATION

Grovedale Neighbourhood House
45 Heyers Road
Grovedale

BOOKINGS

Contact Grovedale Neighbourhood House to book your spot today on 5241 5717

GNH TASTER SERIES

This activity is part of the Grovedale Neighbourhood House Taster Series made possible by grant funding received from the City of Greater Geelong through its Community Investment and Support Fund.

Uniting

Uniting Barwon provides emergency relief (ER) assistance to individuals and families in our local community who need practical support during times of financial and personal struggle.

Join us at the Uniting Book Sale

Nothing over \$1
Children's books
\$0.50!

Uniting Monthly Book Sale

Held the first Friday and Saturday of each month (10am – 2pm) at Uniting Grovedale, the book sale raises much needed funds for local services and Emergency Relief programs.

272 Torquay Rd, Grovedale
(Corner Reserve and Torquay Roads)

Emergency Relief

**Come to us when
times are tough**

Grovedale 4210 1100
Mon-Fri 9am-12noon

Norlane 5278 8492
(open mornings
Tuesday – Thursday)

E: [barwon-
admin@vt.uniting.org](mailto:barwon-admin@vt.uniting.org)

Our Emergency Relief program provides:

- A safe and welcoming space where you will be heard and respected
- Resources for people in hard times

We offer a free and confidential service to Barwon residents from our emergency relief centres in Grovedale and Norlane, offering support such as:-

- Food and food vouchers
- Clothing and household items
- NILS (No Interest Loan Scheme)
- Education Assistance Program
- Advocacy and links to other services

Grovedale: 272 Torquay Road Grovedale
Norlane: 9 Wendover Avenue Norlane

Emergency Relief Volunteer vacancies with Uniting Barwon

Volunteer vacancies with Uniting Barwon include:

- Food Distribution Team Members (assisting our clients)
- Receptionists (greeting & organising client appointments)
- Interviewers (assisting our clients)
- Grounds and Maintenance Team Members (mowing, weeding, cleaning etc.)
- Van crew for the Emergency Relief Mobile Van Program
- Van Crew Members or Drivers (pickups and deliveries) to support ER programs

If you enjoy being part of a can-do volunteer team, even for a few hours a week, please visit Volunteering Geelong or call 4210 1113 or email fay.lake@vt.uniting.org

**Support vulnerable people in the community and help
make a difference.**

Uniting



VOLUNTEER FACILITATORS WANTED COMMUNITY KITCHENS

Community Kitchens are calling for volunteers to facilitate weekly cooking session in multiple locations throughout Geelong and Bellarine region.

About you

- You are able to relate well to people from all walks of life
- You are able to organise the kitchen program during school terms at a local community kitchen
- You love cooking and enjoy sharing meals with a small, friendly group for 3-4 hours per week

What you'll get

Matched to a local Community Kitchen group ☒

Free recipe resource packs and facilitator training ☒

Food handling, kitchen safety & budgeting and healthier menu planning certification ☒

Register here



Contact the Community Kitchens Coordinator for more information or to register
Email: healthycommunities@barwonhealth.org.au Phone: 03 4215 3476
Visit our website - www.barwonhealth.org.au and search for community kitchens to learn more

The Grovedale Marshall Probus Club is a Combined Club for men & women retirees



It is so easy to underestimate how much of a role joining a social club such as a Probus club can play in enriching our lives. It gives us the opportunity to build new friendships, explore our personal interests, create excitement in our lives, switch up our routine and develop skills and knowledge which are valuable for life.

But until we actually take the chance to join a club like ours, we can only see for ourselves the benefits it has to offer...

Each Probus club has its own niche and is usually based around shared interests. The benefits of joining a club like ours are that you get to engage your interests and spend more time pursuing those interests with like-minded people, or be exposed to new interests; meet a group of people sharing the same passions; enjoy the opportunity to eat, drink and be merry on a regular basis. Go on daily trips or trips to the bush or interstate. It's never too late to get involved in new activities.

Membership is open to anyone who is retired or semi-retired, so why not join the tens of thousands of Probus members across Australia and New Zealand who have joined their local clubs and come along to your local club and find out what the Grovedale Marshall Probus Club is all about.

Enjoy your retirement – Join our Probus community today!

Monthly meetings are on the second Thursday of each month at 9.45am for 10am in the Grovedale Community Hub, 45 Heyers Road, Grovedale. Everyone Welcome!

Some reasons to join!

- Listen to interesting guest speakers
- Regular activities, outings, Mystery Bus Trips
- Make some great new friends
- Lunches and coffee mornings throughout each month



General Enquiries:

Anne Lane (Secretary), 48lane44@gmail.com.

Membership Enquiries:

Viv Buchanan, 0458 288 504 or email:
Viviennebuchanan51@gmail.com

Mailing Address:

Grovedale Marshall Probus Club.
PO Box 2140, Grovedale East, VIC 3216

Website: <https://www.probusouthpacific.org/microsites/grovedalemarshall/welcome>



3216 COMMUNITY



Grovedale Uniting Church is situated on the corner of Torquay and Reserve Roads, Grovedale.

A warm, friendly, caring community, we meet each Sunday for worship at **9:30am**, with the service also live streamed via our website (grovedale.unitingchurch.org.au).

Easter is an important season for Christians, as it is the time we remember the death of Jesus on a cross on Good Friday, and his Resurrection on Easter Sunday. We are holding several Easter services:

7pm March 28, Maundy Thursday Reflections. 9:30am March 29, Good Friday

worship, and of course our **Easter Sunday celebration service, 9:30am March 31**. You

would be most welcome to join us. Please contact Peter on **0419 165473** for more details.



Eggs are also symbolic of the season. From earliest times, the egg was a symbol of rebirth. The baby bird breaks the shell open to begin its new life. Many Easter eggs are hollow, and can be a reminder of the new life that exploded from the tomb on Easter Sunday.



Our regular activities

Our **Prayer Group** meets in the church most **Thursday mornings at 9:40am**.

Christians believe that prayer can be a powerful force for change, and can also bring comfort and healing.

For further details, or for a personal prayer over the phone, please contact **Peter** on **0419 165473**.



10am Tuesdays during school term. A music and movement program for children from birth to 4 years old. Cost \$5.



5pm on the 4th Friday of the month. Focused on families, there is craft and games

followed by an interactive worship time, concluding with a shared tea.

Kid's Church: 9:30am Sunday on the third Sunday of the month. An interactive learning opportunity for children and families.



Please contact **Dianne** on **0458 726259** for enquiries about these activities.

Find us on Facebook: **Grovedale UC Children and Family**

Craft Group: 10am Thursday during school term. Details call **Rhonda: 5243 6496**.

Growth Group (Bible Study): 7:30pm Tuesdays during school terms. Details call **Jim: 52437060**



Chattels and Chats Opshop and Bookshop

Open **Wednesday, 10am-4pm. Friday, 10am-3pm.**

10am-3pm First Saturday of the month.

Details: **Contact Wendy: 0488 435702.**

New volunteers always welcome!



We also share our site with *Interlude Coffee*, and **UNITING** Barwon.

UNITING provide support to those needing financial or welfare assistance.

They are open **9:30am-12 Monday to Friday**, and can be contacted on: **4210 1100**.

If you have a question about Faith or Spirituality or would like to know more about the church, please contact **Rev Peter Jewell** on **0419 165473** or Em. psjewell@netspace.net.au

grovedale.unitingchurch.org.au.



Enjoy the many ways to read the Grapevine

EMAIL: Subscribe to our email list please enter your details at
<https://mailchi.mp/23f04d167998/grapevine>

WEBSITE: Visit our website at www.grovedalenh.org.au/grapevine

PRINT: Pick up a copy from the Grovedale Neighbourhood House
reception desk at 45 Heyers Road.

Advertise with us

We accept advertising for the online version of the Grapevine.

Please contact info@grovedalenh.org.au or phone us at (03) 5241 5717.



GROVEDALE
NEIGHBOURHOOD HOUSE

45 Heyers Rd, Grovedale VIC 3216

Phone: 5241 5717

www.grovedalenh.org.au